

## RESTAURANT & BAR

The 16 Haussmann Restaurant, is an essential venue for all those who love intimate dining, in a setting featuring true Parisian decor that exquisitely combines tradition and modernity. The setting, which is both original and elegant, was designed by Sybille de Margerie and features royal blue Bayadere style stripes, ochre and mahogany, which are mixed with drapes, trompe-l'oeil materials, and furniture designed by Stark.

A pleasant patio, ideal for warm summer evenings, where teak tables and chairs are laid out amidst selected greenery, is also available for use from early spring through the summer months. This high-class restaurant, which is resolutely Parisian, offers an outstanding balance between quality, customer reception and service.

Upon request, you can book all or part of the restaurant for private functions.

The Lindbergh Bar offers a mixed atmosphere and ambiance: it is cozy inside, while the outdoor patio is more open.

It changes with the seasons, with honey yellow tones dominating in spring and summer, while deeper plum colors are featured in winter.

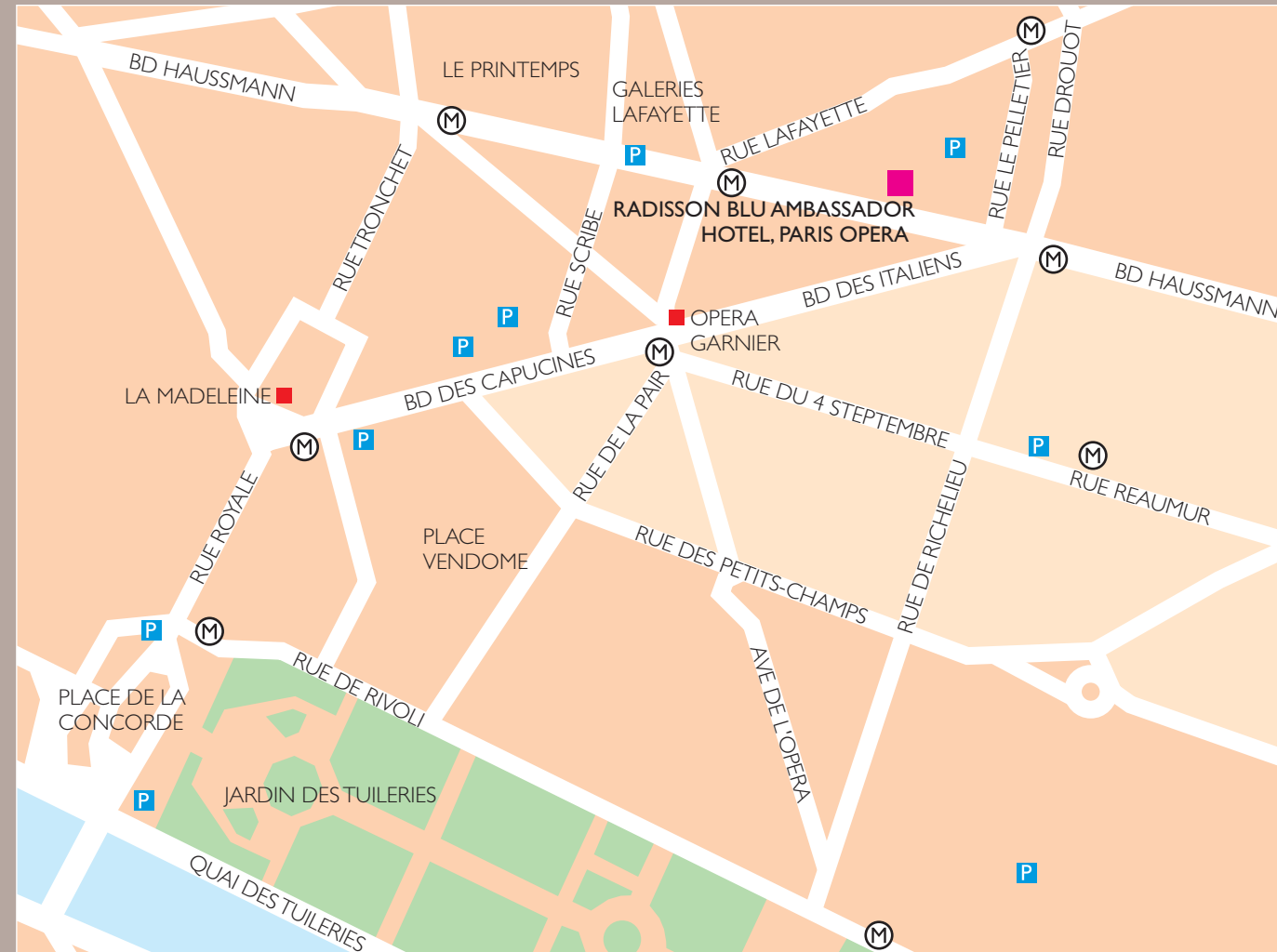
The mood also varies depending on what time of day it is. In the morning, when it is open to the general public for business breakfasts, the bar is a lively place. During the daytime, it becomes an atmospheric bar, and then in the evening friends come to sample a cocktail or two in a warm setting.



© F. Rambert



© F. Rambert



- **FROM CHARLES DE GAULLE AIRPORT:**  
(45min) according to the traffic.  
- TAXI (around 50€)  
- BUS: ROISSYBUS - Shuttle bus from airport to OPERA, then 5 minutes walk to the hotel.  
- TRAIN - RER B to CHATELET LES HALLES transfer to RER A to AUBER, then 5 minutes walk to the hotel.
- **FROM ORLY AIRPORT:**  
(30min) according to the traffic.  
- TAXI (around 40€)  
- BUS: ORLYBUS to INVALIDES, then Metro line 8 towards Créteil. Get off at RICHELIEU DROUOT then 1 minute walk to the hotel.  
- TRAIN: ORLYVAL then, RER B to CHATELET LES HALLES transfer to RER A to AUBER then 5 minutes walk to hotel .

- **BY CAR:**  
- FROM THE NORTH (A1 highway): Enter Paris by **Porte de la Chapelle**. Follow signs indicating **OPERA** district (via rue de la Chapelle, bvd de la Chapelle, rue de Maubeuge, rue Le Peletier, bvd Haussmann).

- FROM THE SOUTH (A6-A10 highway): Enter Paris by **Porte d'Orléans**. Follow signs indicating **CONCORDE - OPERA** districts (via av General Leclerc, Bvd Raspail, rue du Bac, Seine tunnel, rue des Pyramides, Av de l'Opera, bvd Capucines, bvd des Italiens, bvd Haussmann).

- FROM THE EAST (A4 highway): Enter Paris by **Porte de Bercy**. Drive alongside the Seine and follow signs indicating **BASTILLE** district (via bvd de la Bastille), then **OPERA** (via bvd Beaumarchais to Place de la République, and bvd St Martin straight to bvd Haussmann).

- FROM THE WEST (A13/14 highways): Take the Périphérique Nord and enter Paris at **Porte Maillot**. Follow signs to **OPERA** district (via ave Grande Armée, av des Champs Elysées, Rue Royale, bvd Madeleine, Capucines, Italiens and bvd Haussmann).

**BON VOYAGE !**

**Radisson Blu Ambassador Hotel**  
16, boulevard Haussmann, FR-75009 Paris, France  
Tel: +33 1 44 83 40 40, Fax: 33 1 42 46 19 84  
reservations.ambassador.paris@radissonblu.com  
radissonblu.com/ambassadorhotel-paris

## Radisson Blu Ambassador Hotel, Paris Opera MEETING PLANNER



© F. Rambert

**Radisson** **BLU**  
AMBASSADOR HOTEL  
PARIS OPERA

## WELCOME

In the heart of Paris, the Radisson Blu Ambassador Hotel Paris Opera is located within walking distance of the famous Opera Garnier, the major Paris department stores and the business district. Opened in 1927, the hotel expresses through its address, boulevard Haussmann, and its architecture all the authenticity of Paris now and future.

The Radisson Blu Ambassador Hotel Paris Opera offers a fitness room with superb views on Paris rooftops, for the exclusive use of hotel guests. Very close to the major department stores, only steps away from the Opera Garnier, the Louvre and d'Orsay Museums, or even Montmartre and its Sacré Coeur, the hotel proposes a large choice of theatres, cinemas, concert halls, restaurants within short walk.

## ROOMS

From the "Standard" category rooms through to its Suites, the rooms at the Radisson Blu Ambassador Hotel Paris Opera combine tradition and modernity.

- 294 spacious rooms including 12 Junior Suites and Suites
- Smoking and non smoking rooms
- Room overlooking on the boulevard Haussmann or in our court side view
- Internet connection
- 32 TV channels, Minibar, kettle, air conditioning
- Business Class rooms with Nespresso machine
- Access to the fitness centre



© F. Rambert



© D. Launay



© F. Rambert

## MEETING & EVENTS

With 8 modern & daylight meeting rooms, welcoming from 10 to 250 persons, the Radisson Blu Hotel Ambassador will be the ideal venue for both small meetings and major events in Paris. All rooms are air conditioned and offer modern audio visual equipment as well as high-speed Internet access for meeting delegates.



© F. Rambert

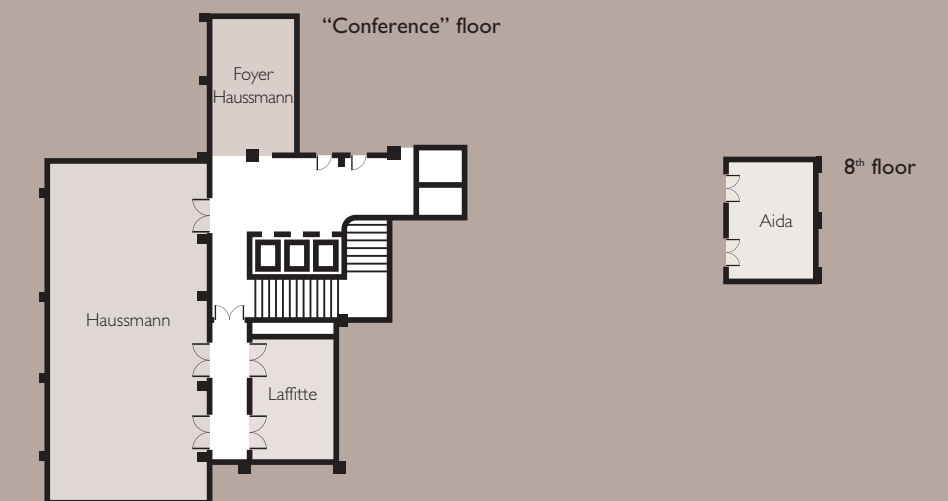
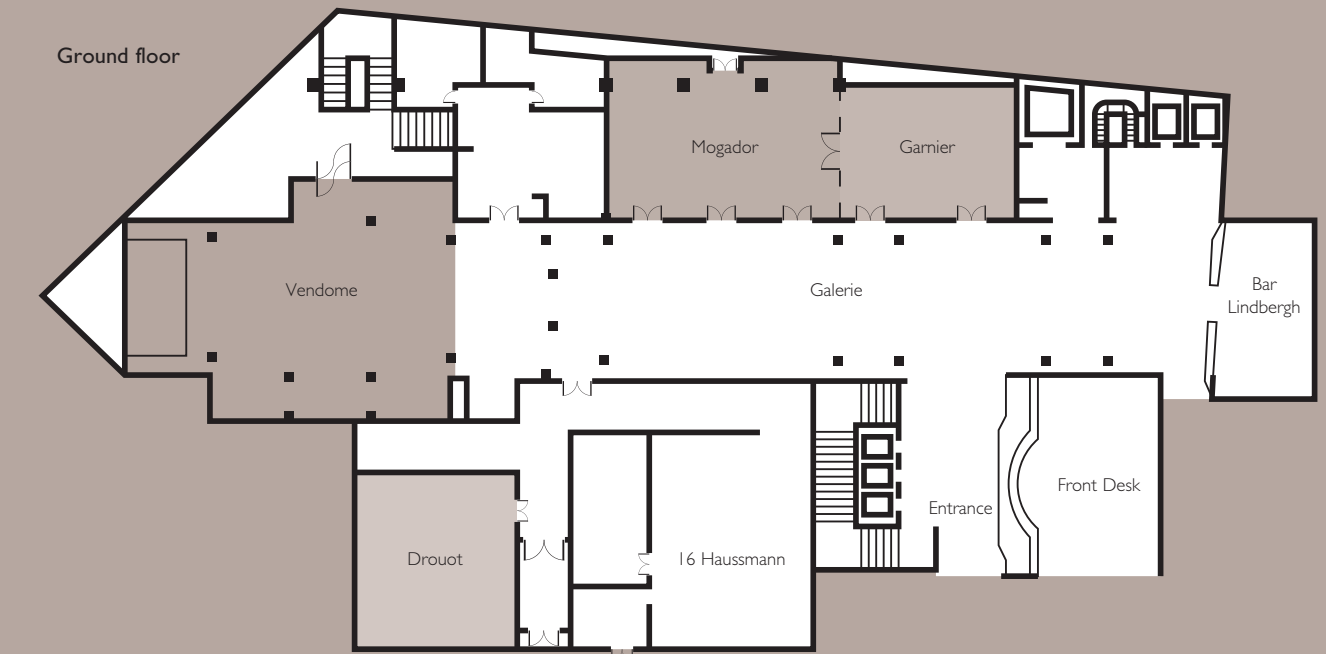
goldpointsplus

Earn Gold Points® for organising events at the Radisson Blu Ambassador Hotel. Just register your meeting under your name and goldpoints plus membership card and reap the benefits. For more information please see [goldpointsplus.com/planners](http://goldpointsplus.com/planners)

PARTNER  
MPI



© F. Rambert



	m <sup>2</sup>	Style « U »	Style Ovale	Style Rectangle	Style Classe	Style Théâtre	Style Banquet	Style Cabaret	Style Buffet	Style Cocktail
Vendome	240	54	54	58	120	200	150	70	120	250
Haussmann	125	44	44	48	80	140	100	48	80	130
Mogador	85	35	35	38	42	90	72	40	62	90
Drouot	80	30	30	36	42	90	60	40	50	80
Garnier	55	22	22	26	24	50	48	24	30	40
Laffitte	25	-	12	12	15	30	20	-	12	30
Aida	25	-	12	-	-	-	-	-	-	-